

RESIDENTIAL



EXTREME



HOSPITALITY



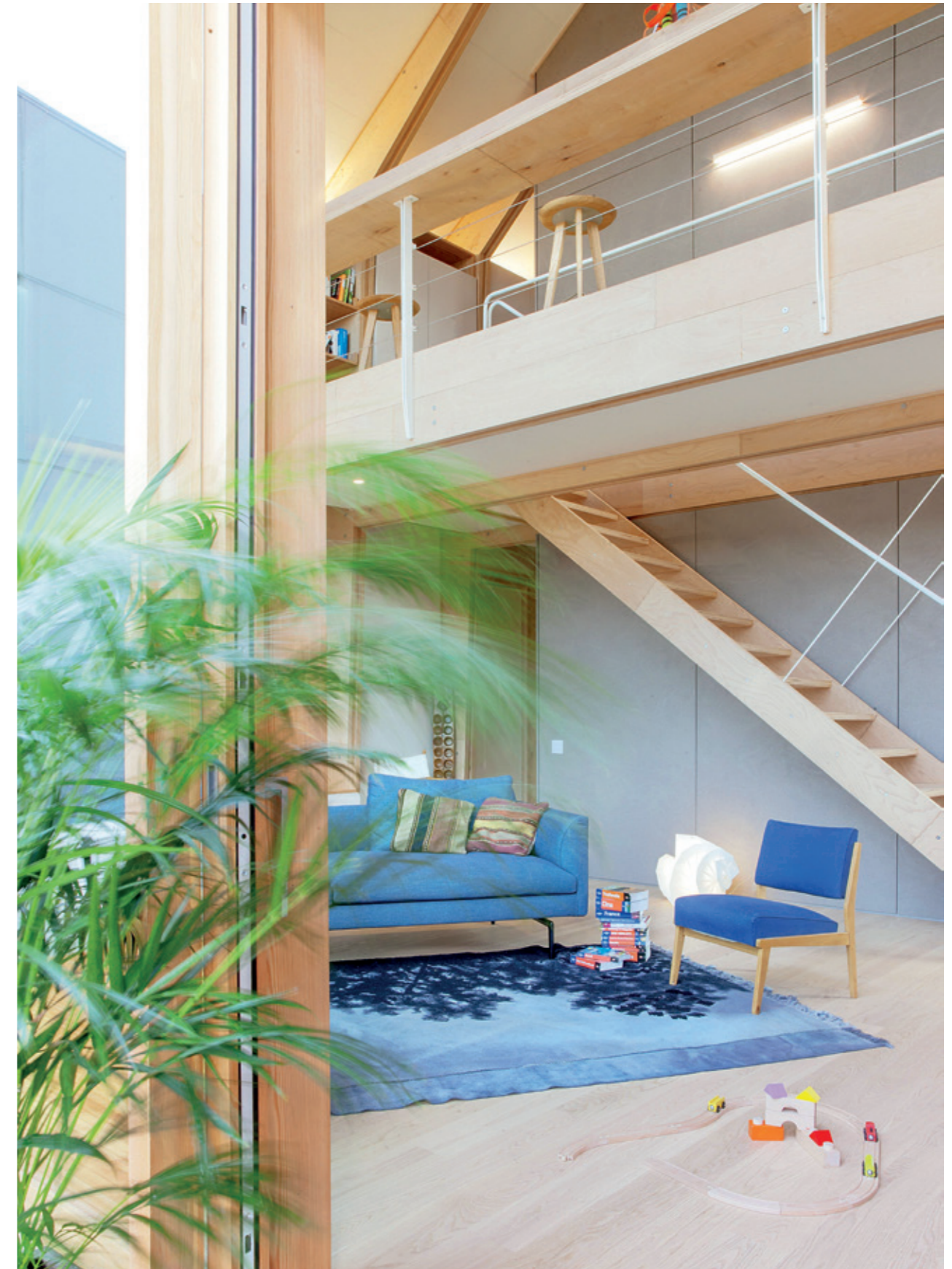
Build
for a
beautiful
future

Welcome home

Building beautiful houses, holiday retreats, urban villas or shelters in the wild: is there anything more rewarding than creating places people call home?

Leap construction systems combine advanced manufacturing and contemporary design, for **tailored turnkey projects with the highest environmental standards** and substantial economic benefits.

Make room for a fulfilling lifestyle: easy-to-build spaces designed for personal well-being.





What we offer: a faster way to great building

Our products allow **architects and developers** to **reduce construction time and costs**, while creating smarter, greener living spaces.

Leap solutions are based on modular systems. All the elements are manufactured in Italy to be easily and rapidly assembled on site, with a lower impact on the local environment. Customisation is endless: whatever the size, features and location of a project, **our patented method always provides fully equipped, energy-efficient houses** ready to be lived in.

**Premium homes,
10 times quicker
than conventional
development.**

The high-performance dry construction open system

Fast-paced development is our priority. Dry construction guarantees **a safe, certified process with stable timing**, less vulnerable to natural conditions and project delays. Our team handles all aspects of engineering, factory manufacturing, project management, shipping, setting and finishing – we also partner with on-site workforce that can ensure local expertise.

One method, endless configurations – for any need, taste, location.



Turnkey: from project to building in under 3 months. Including plumbing, power, heating/cooling systems and placed furniture.

1.



Developers choose where to build.

2.



Architects draw the project in collaboration with our designers.

3.



A detailed plan specifies costs, timing and quality standards.

4.



We customise our solutions according to the project.

5.



All components are made in Italy with numerical control machines.

6.



Local contractors prepare foundations and utility connections.

7.



Our building kit is delivered on site.

8.



Installation is complete within 4-6 weeks through simple operations.

9.



Everything is ready. Householders and guests can move in.

Made-in-Italy design: millimetric precision

Minimalist beauty meets superior comfort in all our building solutions – it's our trademark. From foundation to light switches, every element is carefully designed and manufactured in Italy with factory precision. This gives us full control over materials and product quality, down to the tiniest detail.

Our systems allow architects and owners to deeply personalise their homes. Each project is followed by a dedicated designer from our team, who helps choose finishes and optional modules: **exteriors and interiors reflect the taste of those living them.**

**Inspiring lights.
Distinctive shapes.
Healthy materials.
Leap spaces are the
essence of contemporary
luxury living.**



Complete furniture integration

Built with integrated furnishing, Leap structures offer better spaces that avoid overlapping of wall layers and useless components.



Greener, factually

When sustainability is real, it benefits everyone: developers, owners, future generations.

Recognised among the most ecological choices on the market, **our systems massively decrease environmental impact** compared to usual building processes. Leap houses set the benchmark for energy efficiency.

Fragile environments require conscious expertise

Projects developed with our sustainable products receive construction permits where traditional houses are prohibited, dangerous or downright impossible.

During construction

With a “zero-impact” approach and minimal use of resources, Leap buildings preserve the soil and landscape.

- 80%** waste
- 98%** water consumption
- 60%** volume of materials
- 90%** energy consumption during transport and assembly
- Minimal construction noise

After construction

Built with certified eco-materials and patented solutions, Leap structures are energetically self-sufficient and completely reversible.

- 90%** environmental footprint
- 100%** formaldehyde-free ecologically certified recyclable materials
- 100%** reversible
- Energy self-sufficiency



The brightest financial outlook

Excellence is the best asset. With Leap systems, developers can refinance or scale up their plans faster.

We firmly believe smart investments should pay off as quick as possible. Our off-site building method promises **a swift ROI and higher profit margins**, thanks to construction speed, ease of transportation and resource-saving practices.

Timing and costs are set at the start to guarantee **maximum transparency: no missed deadlines**, no hidden expenses.

Environmentally conscious, economically savvy

Being Nearly Zero-Energy Buildings, Leap constructions receive several tax credits and/or incentives in most countries. Eco-friendly homes are usually resold at higher value.





Building against global warming

In a dramatically changing climate, our extremely durable systems are conceived to guarantee maximum safety in case of hurricanes, hailstorms or earthquakes.

We are proud to say that, according to LCA indicators, our constructions have a negative Global Warming Potential with a positive impact in terms of CO₂ equivalent emissions.





Residential

Imagine a place where happiness is easy. Fulfilling living is at home in our houses: open to countless variations, our unique buildings create light-filled spaces for everyday life, to last and evolve.

Built for well-being





Easy to personalise,
pleasant to live in.
A really smart home

Leap homes give their owners plenty of space to express themselves. From finishes to furniture – everything can be customised to guarantee that **each house is unique, just like people who live in it.** Interiors are equipped with home automation system for peak functionality.



Dream homes
that change with
people's dreams

Our systems are at the very top in energy performance and flexible construction technology. As time goes by, **our buildings follow the needs and wishes of their people,** evolving with the lives they hold. Changeable indoor layouts and dimensions create spaces made for never-ending transformation.

Natural materials
that make living
healthier



Style, comfort
and sustainability
under the same roof



Extreme

Dream bigger, dream higher.
Thanks to our technology, dwelling systems reach new peaks:
our hyperefficient solutions allow pioneers to live where no man
has before, to find a deeper connection with nature.

Built to dare



Engineered to endure.
Tried and tested
on reality

Leap was born on mountains. With an incredibly solid background in a highly-specialised field, our products deliver **the ultimate homebuilding model for wild environments**. Our lodges and hubs are realised off-site using advanced solutions, and then installed with a limited number of basic operations, wherever they're needed – even in the most challenging settings.



Absolute safety
in the toughest
places

Flexible and sturdy, our cosy units are perfect for resting and admiring natural landscapes. Thanks to their energy-efficient shells and greater insulation, Leap hubs have exceptional off-the-grid performance while fully respecting the environment. **Our structures have proven to withstand any weather condition:** hurricane-force winds, heat waves and extreme temperature variations.

Using the highest technology for a lower footprint



Home sweet home, no matter how far



Hospitality

Searching for freedom, but want to feel pampered? Luxury and simplicity live together in the accommodation facilities realised with our innovative systems. Combining comfort and style, our structures speed up construction and Return on Investment.

Built for wonder



Green solutions flourish in contemporary lifestyles

As city dwellers look for an escape, the premium hospitality industry is booming, with new trends like “glamping” and “staycation” on the rise. **Our range of sustainable products perfectly suits a great variety of outdoor and upscale stays**, from exclusive retreats in nature to hidden lodges to indulge in, relaxing and exploring the wilderness.



The easiest chance to seize new opportunities

Thanks to their modular approach, Leap pre-manufactured solutions help **hospitality business owners achieve scalability in their investments**. Dry construction buildings are flexible: they can be resized, expanded or even moved to different locations, reducing financial risks.



The fastest way
to enter and grow
in the market

Feeling at home
is simple, when
beauty is functional

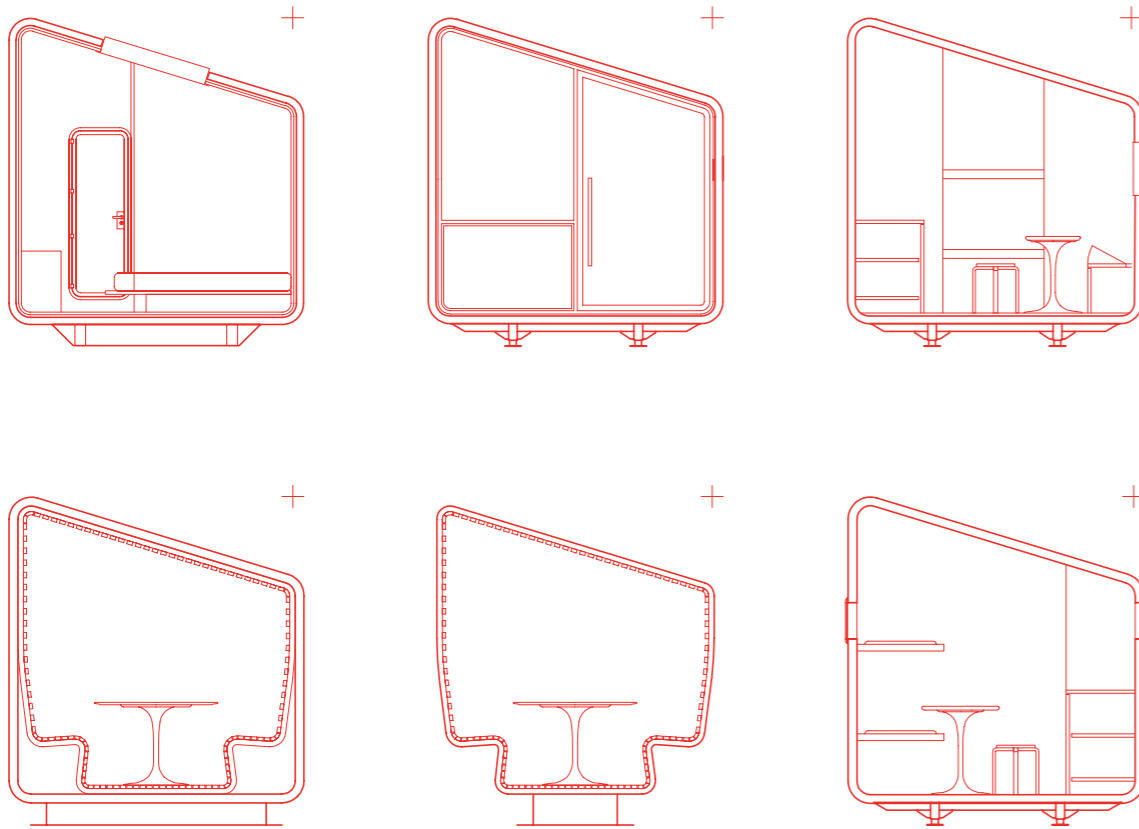


Four modular systems, countless combinations

Large real estate and small-scale projects. Cities, the countryside, remote destinations. Luxury housing by the sea, high-tech mountain units. Leap products come in four ranges of customisable modules that developers and architects can combine as they wish.

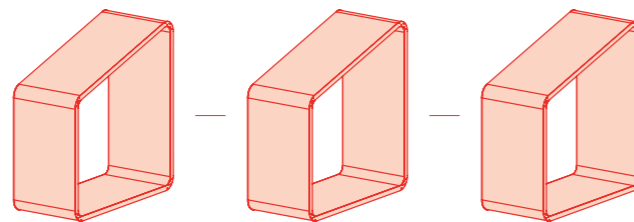
NEST

WIDTH	2.7 m / 3.33 m
LENGTH	from 1.2 m each 1.2 m
FLOORS	1



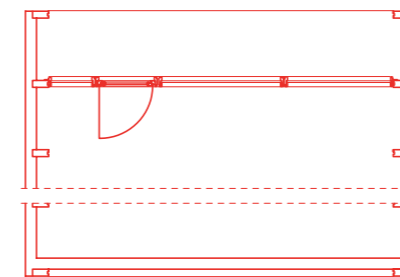
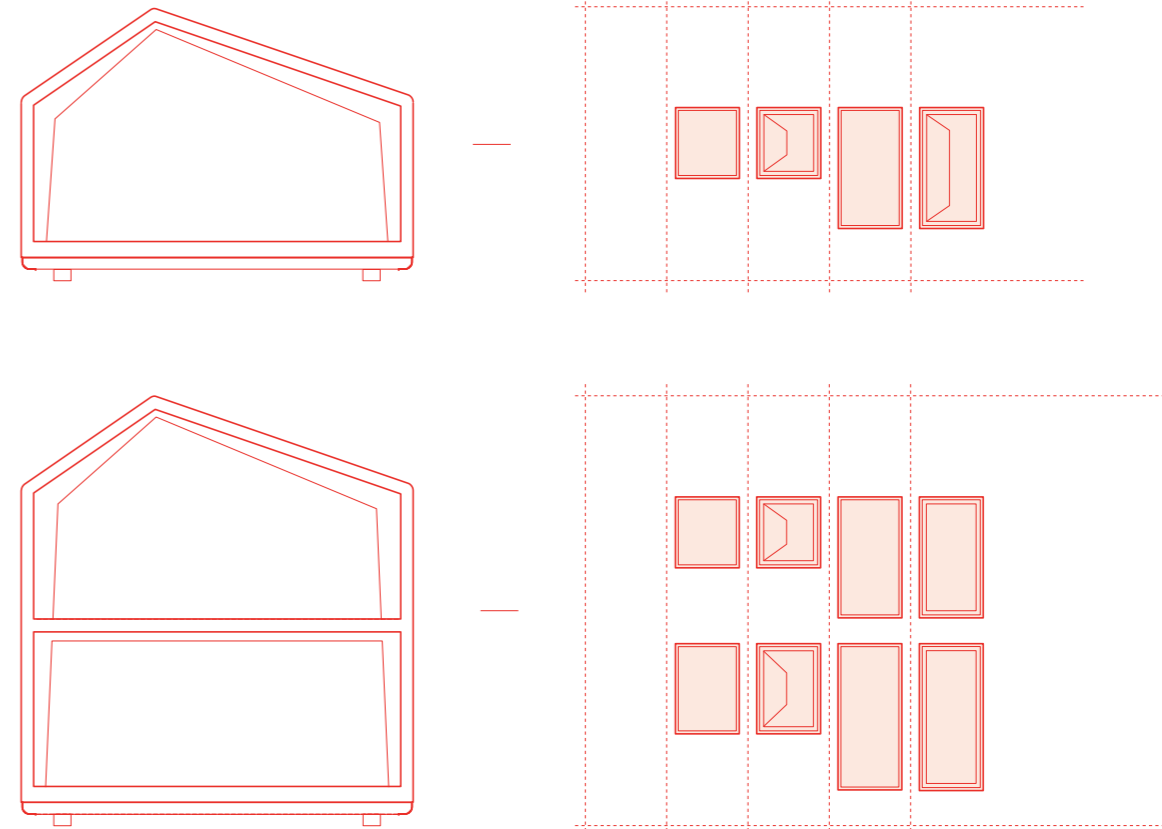
Nest creates quiet shelters to escape city rhythms and relax. Their intimate cabin spaces, based on a system of simple modules, are suitable as backyard pavilions as well as for lodging in nature.

+ Off-grid version



FRAME

WIDTH	6.8 m / 8.4 m
LENGTH	from 6.0 m each 1.2 m
FLOORS	1-2
EFFICIENCY	NZEB up to passive-house



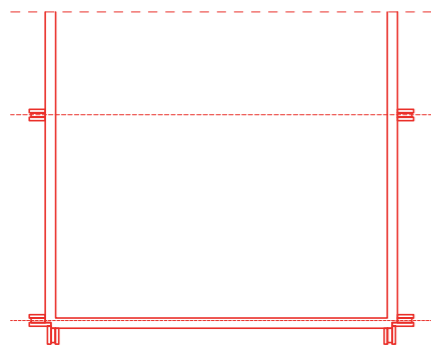
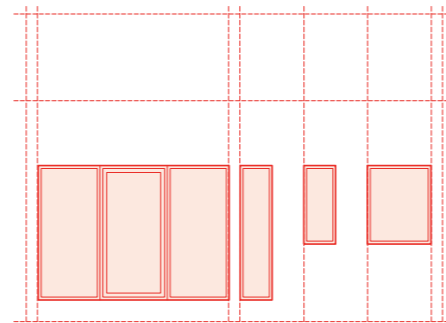
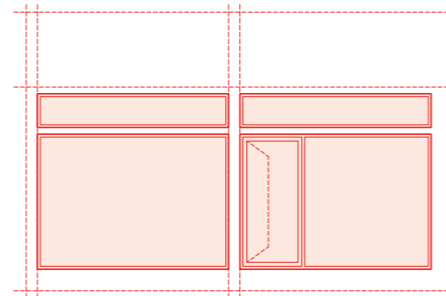
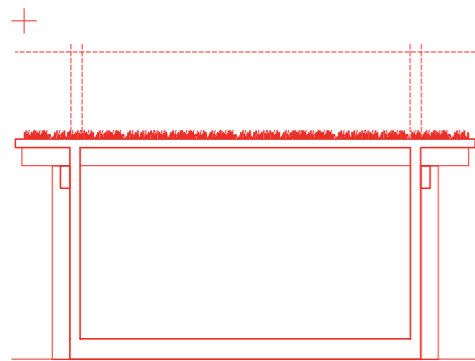
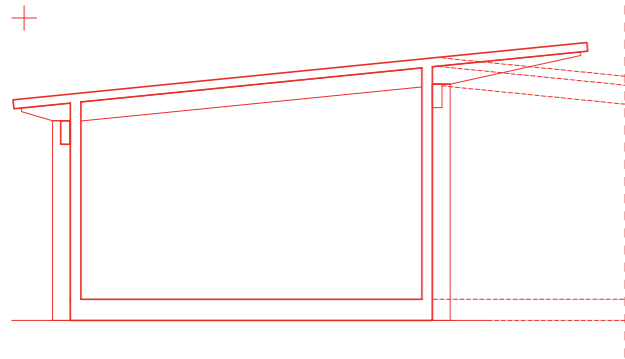
+ Hurricane-resistant version + Off-grid version

01 02 03 04 05 06 07

Frame is our signature product. Its iconic shape gives a roof to maximum flexibility: this system, from indoor layouts to external finishes, can be fully customised to reflect any lifestyle.

LANDSCAPE

WIDTH	2.4 m up to 6 m and multiple
LENGTH	from 3.6 m each 3.6 m
FLOORS	1-3
EFFICIENCY	NZEB up to passive-house

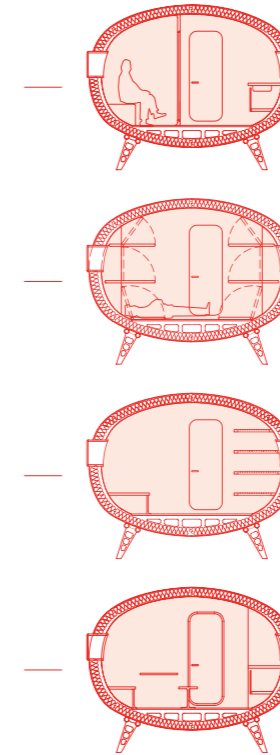
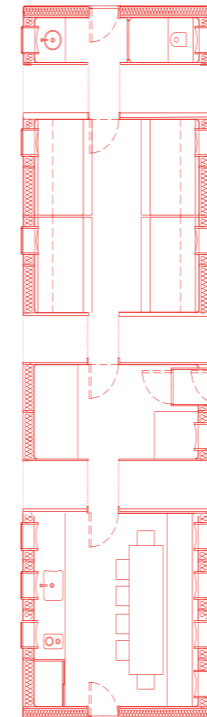


Landscape houses stand out for their contemporary charm. Thanks to their solid wooden beams and sweeping windows, these structures seamlessly seal the airy interiors with the surroundings.

All Landscape elements are designed for the best bioclimatic behaviour, delivering superior functionality and a remarkable appeal to indoor spaces.

+ Hurricane-resistant version + Off-grid version

HUT

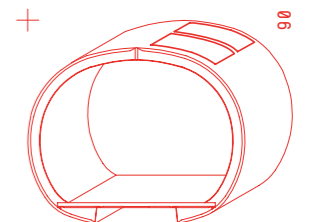
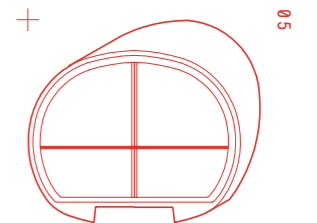
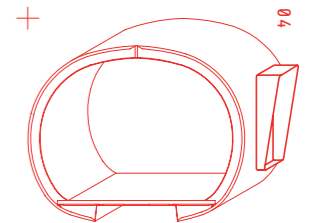
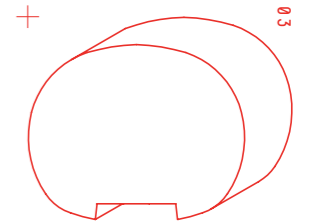
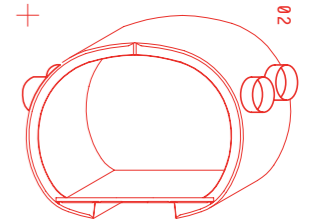
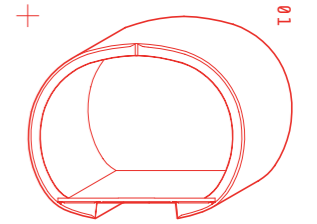


SANITARY MODULE SLEEPING MODULE ENTRANCE LIVING MODULE

Born from the love for mountains, Hut is our innovative system for high-altitude and other extreme environments. Modules have specific functions and are assembled in super-efficient pods.

WIDTH	3.55 m
LENGTH	from 2 m each 2 m
HEIGHT	2.87 m
EFFICIENCY	High Energy performance

+ Off-grid version





Inside Leap.
Superior buildings
for zero-impact
dwelling



Climate change, stricter home regulations and the shortage of qualified manpower are pushing the construction industry towards greener, simpler practices. But no one seemed to ask the important question: why are our houses still being built the same way?

At Leap, we are committed to answering **the growing demand for sustainable living with a high-quality development model** that can overcome new social, ecological and economic challenges.

Italian by birth. Global by nature



It all began when an Italian duo of architects and mountain lovers decided to unite their passions: wilderness and structure, technology and beauty.

Stefano Testa and Luca Gentilcore founded Leap in 2012, when the Turin Alpine Club commissioned them a new hut on the Mont Blanc to replace the old Gervasutti refuge. Their bivouac at 9,843 ft (3,000 m) above sea level won several awards and laid very solid (but always flexible) foundations for a new model of home building.

After having lived and explored so many different environments, Leap's research for zero-impact dwelling is still driven by a never-ending love for nature.

Our team steadily grows, adding new professions and philosophies in the fields of engineering and design, IT and management, to cooperate with the developers and architects that choose our systems for their works. A network of business partners and dealers guarantees local support and an international presence, as well as the familiarity and quality of trusted working communities.



The world is our test lab Constructions built with Leap systems proudly stand in the green of Piedmont's hillsides and on the ice of Qeqertarsuaq, in Greenland. Our LeapRus hub on the Mount Elbrus, in the Caucasus, is the world's highest eco-hotel.

Model overview

Leap supplies and works with forward-thinking developers, entrepreneurs and real estate owners.

Projects

Architects design and plan, we provide the technologies to build. Our team is always ready to collaborate with firms and professionals to find the best solutions for their buildings; our project managers take care of all time-consuming stages of the process.

Manufacturing

Leap systems are based on customisable pre-manufactured elements: they are entirely engineered and produced in Italy, starting from materials and components sourced from trusted European suppliers.

Serial production with numerical control techniques guarantees superior precision compared to traditional construction method.

Assembly

Our modular elements are shipped worldwide in compact kits. Local workers can easily assemble our products on site, through basic operations. Thanks to our dealers, Leap provides direct support in site preparation, installation and after-sales services.

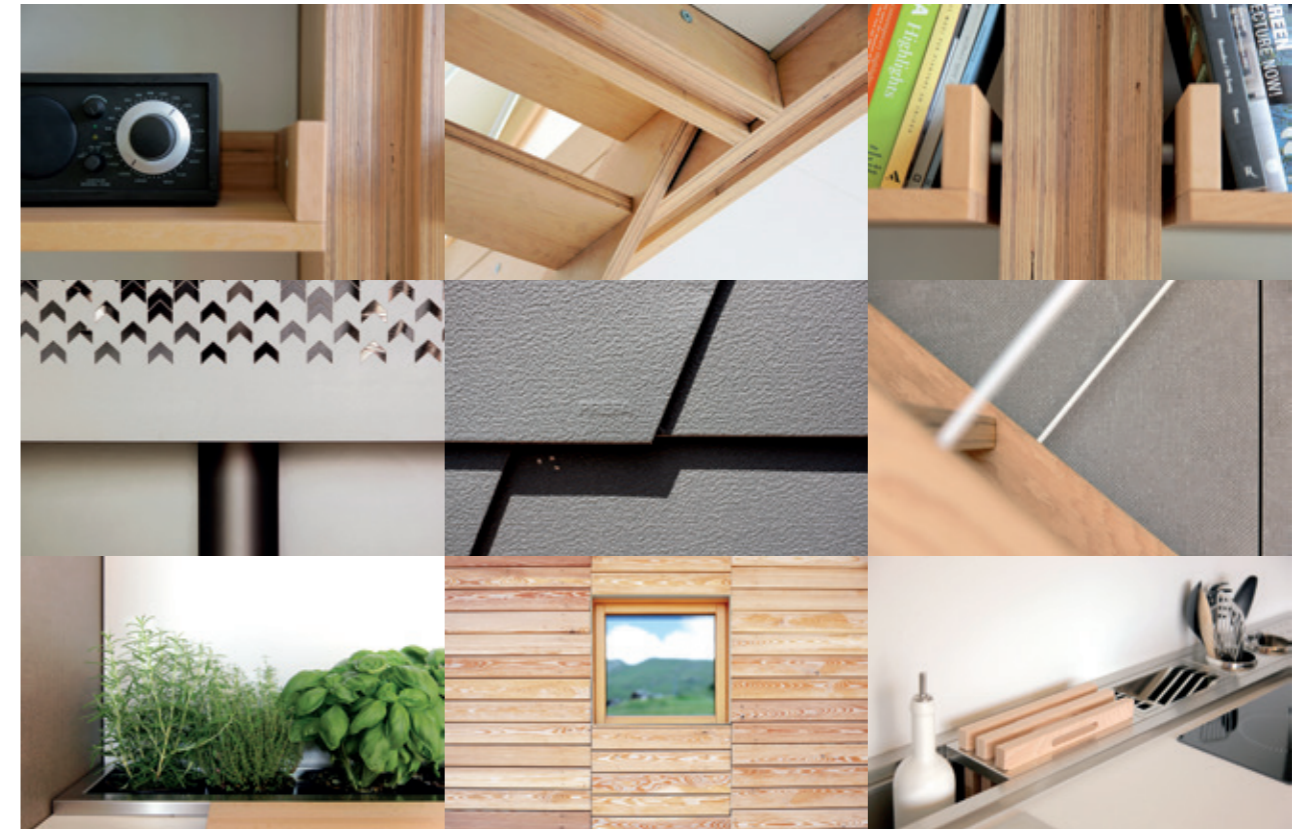
Interiors and Tech

Leap products are fully equipped: plumbing, electrical systems, heating and air conditioning, with the option of photovoltaic cells and off-grid equipment (sewage, thermal pack).

Leap collaborates with established home automation and interior design partners: our buildings are completed by first-class integrated furniture and finishing.

Our construction systems save resources, time and money, and create high-value houses with minimal environmental impact.

- + Simple process
- + No risk
- + Fastest building time
- + Reduced construction costs
- + Ecological
- + Flexibility & Durability
- + Turnkey products
- + Technological integration





**Editorial design, art direction,
graphic design & copywriting**
Bellissimo

Photography

All pictures by Francesco Mattuzzi / Leap Factory Archive
excluding: pages 25, 26, 38, 41 by Paolo Verzone - Canon-Europe for "The Ariston Comfort Challenge"
and page 30 by Plastikwombat



This publication is printed on
FSC-certified paper by Gmund.



Project LeapHome has received funding from the
European Union's Horizon 2020 research and innovation
programme under grant agreement N. 781834

LEAP FACTORY

via Lodi 23, 10152 Torino / Italy
+39 011 4548979
info@leapfactory.it
leapfactory.it